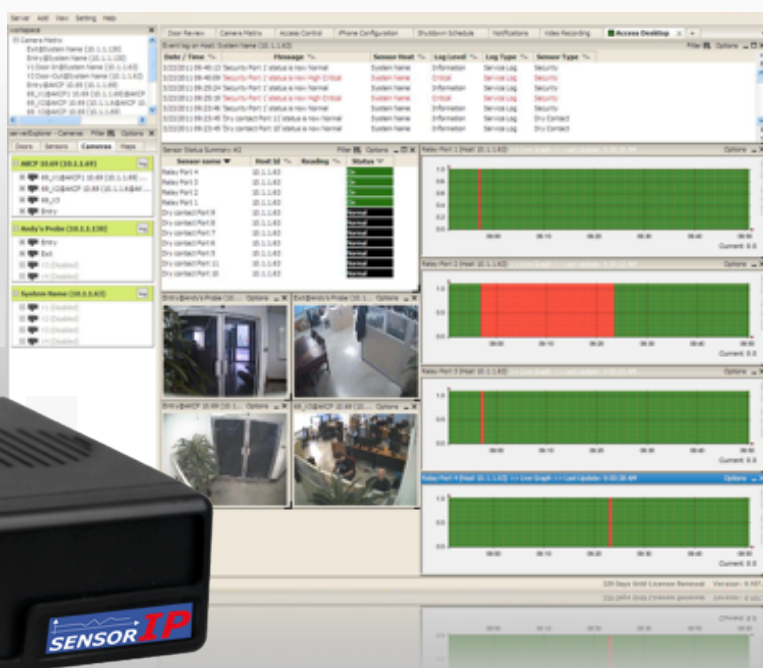


SENSOR IP8



SENSOR IP8

A high-speed, accurate and intelligent monitoring device. The SIP-8-BN is a completely embedded host with a proprietary Linux like OS which includes TCP/IP stack, a built-in web-server and full Email and SNMP functionality.

Based on years of Industry experience it's ready to run right out of the box, simply assign the IP address and connect to the embedded web server.

Introducing the SENSOR IP8

The Sensor IP8 can record all events in its database with a time stamp of when the sensor alarm was raised and the action taken place. A standalone product with no external software dependencies, the Sensor IP8 gives you the very best for your monitoring needs. It has 8 auto-sense intelligent sensor ports which work with a wide range of intelligent sensors. It can use any combination of sensors to monitor temperature, humidity, water leakage, airflow, security and even control relays. Sensor IP sensors can also be used to detect AC voltage and measure DC voltage. Our sensors include an integrated data collection and graphing package to spot trends in the airflow, temperature and humidity.



Sensor IP8 safeguards your infrastructure, resources and investment from external disaster before it happens.

SENSOR IP8's Main Features

- Fully embedded TCP/IP and web-server.
- Built-in notification features - Email and SNMP traps.
- 8 auto-sense ports for connecting any Sensor IP sensors.
- A new improved web-based interface for easy configuration and monitoring.
- Continuous time feature on every sensor port to eliminate false warning alerts.
- Login for User and Administrator for better security.
- Battery backed time of day clock for an accurate system date and time.
- A standalone product without any external hardware and software dependencies.
- Micro code firmware update over the Internet.
- Customized color configuration for displaying alerts.
- Network Management System Integration.

► **Temperature/Humidity Sensor** [SIP-S-T+H](#)



Temperature / Humidity sensors can be plugged into the RJ-45 jacks on the sensorProbe8. The Temperature / Humidity sensor comes with 1 foot of cable. The humidity sensor has its own SNMP OID so that data can be collected over the network and graphed.

► **Security Sensors** [SIP-S-SS](#)



Security sensor with an ALARM/NORMAL indication in software. Security sensors detect doors and windows being opened or closed. SNMP interface for alarm/normal status. SNMP traps sent when critical.



► **Voltage Sensors** [SIP-S-ACV](#) / [SIP-S-DCV](#)

Voltage Monitor sensor with an ALARM/NORMAL indication in software. Voltage sensors can detect the presence or the absence of line voltage.



► **Water Sensors** [SIP-S-WD](#)

The water detector sensor is an advanced microprocessor based design, capable of detecting distilled water. This water detector is designed and manufactured by AKCP.



► **ropeWater Sensor** [SIP-RWS-XX](#)

ropeWater sensors can be plugged into the RJ-45 jacks on the sensorProbe8. This sensor will detect the presence of water anywhere along the rope.



► **4-20 mA Converter** [SIP-S-420](#)

The 4-20 mA signal converter is used to integrate the Sensor IP8 with a 4-20 mA transmitter. 4-20 mA technology is used to communicate analog signals over long distances where electrical interference is a problem.



► **AC and DC Relays** [SIP-S-PRB](#)

PRB00-AC or PRB00-DC sensor controlled relays can be connected to the RJ-45 sensor ports. Tied to another sensor, AC or DC equipment can be automatically controlled by the Sensor IP8.

Industry Certifications & Network Management Systems



NMS Integration for leading network management systems such as:

- AdRem NetCrunch
- IBM Tivoli
- SiteScope
- Quest Software – Big Brother
- Lorient Pro
- Somis WebNM and Denika
- Castle Rock
- Logalot
- WhatsUp Gold
- HP OpenView
- MRTG
- Computer Associates Unicenter TNG

Support and Warranty



- **1 year Limited Warranty.**
- **Unlimited Lifetime Support.**
- **Free Firmware Updates.**
- **Full, Easy to Follow Documentation.**

Technical Specifications

Dimension	Network Interface	Mounting
Size 8.5" x 5.43" x 1.80" 1U Rack Mount Standard Weight 1.72 pounds	Standard 10 Base-T Ethernet RJ-45	1U Rack mount bracket included
Power Requirements	Status Indication	Output
Voltage 7.5 – 9 v Current >= 1.2 Amp	LED indication for Power LED for Network Connectivity LED for sensor online and threshold status	Configurable Output Signals (0VDC / 5VDC) on any of the 8 RJ-45 Sensor Ports
Inputs	Operating Environment	Components
8x RJ-45 ports for connecting SENSOR-IP sensors	Temp : Min. -35° C - Max. +55° C Humidity : Min. 20% - Max. 80% (Non-Condensing)	Manufactured using highly integrated, low power surface mount technology to ensure long term reliability.
Power Over Ethernet	Power Consumption	
SP8 PoE is IEEE 802.3af compliant	Typical 1.12 Watt, 0.15A	